

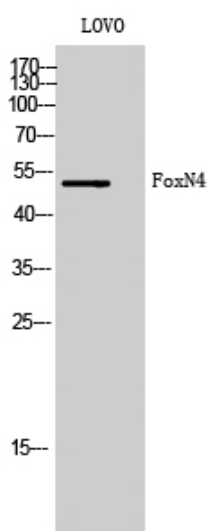


FoxN4 Polyclonal Antibody

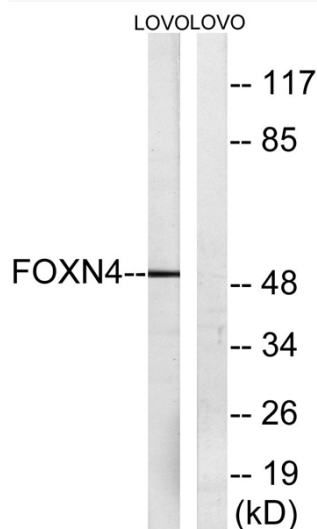
Catalog No	YP-Ab-01731
Isotype	IgG
Reactivity	Human;Rat;Mouse;
Applications	WB;IHC;IF;ELISA
Gene Name	FOXN4
Protein Name	Forkhead box protein N4
Immunogen	The antiserum was produced against synthesized peptide derived from human FOXN4. AA range:411-460
Specificity	FoxN4 Polyclonal Antibody detects endogenous levels of FoxN4 protein.
Formulation	Liquid in PBS containing 50% glycerol, 0.5% BSA and 0.02% sodium azide.
Source	Polyclonal, Rabbit,IgG
Purification	The antibody was affinity-purified from rabbit antiserum by affinity-chromatography using epitope-specific immunogen.
Dilution	WB: 1/500 - 1/2000. IHC: 1/100 - 1/300. ELISA: 1/10000.. IF 1:50-200
Concentration	1 mg/ml
Purity	≥90%
Storage Stability	-20°C/1 year
Synonyms	FOXN4; Forkhead box protein N4
Observed Band	50kD
Cell Pathway	Nucleus .
Tissue Specificity	Brain,Clones donated by RIKEN,
Function	similarity:Contains 1 fork-head DNA-binding domain.,
Background	Members of the winged-helix/forkhead family of transcription factors, such as FOXN4, are characterized by a 110-amino acid DNA-binding domain that can fold into a variant of the helix-turn-helix motif consisting of 3 alpha helices flanked by 2 large loops or wings. These transcription factors are involved in a variety of biologic processes as key regulators in development and metabolism (Li et al., 2004 [PubMed 15363391]).[supplied by OMIM, Mar 2008],
matters needing attention	Avoid repeated freezing and thawing!
Usage suggestions	This product can be used in immunological reaction related experiments. For more information, please consult technical personnel.



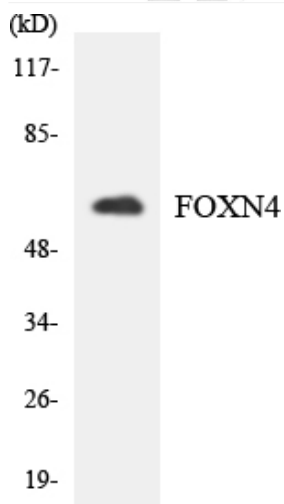
Products Images



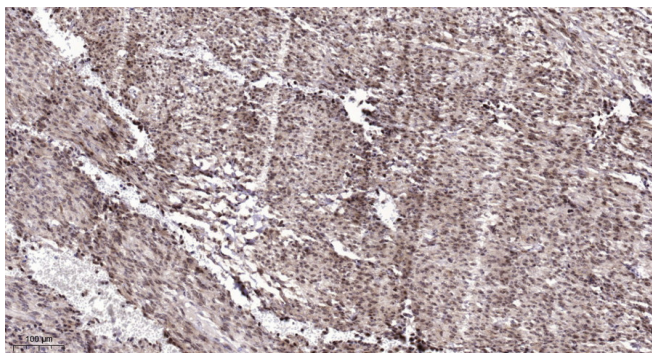
Western Blot analysis of LOVO cells using FoxN4 Polyclonal Antibody cells nucleus extracted by Minute TM Cytoplasmic and Nuclear Fractionation kit (SC-003, Inventbiotech, MN, USA).



Western blot analysis of lysates from LOVO cells, using FOXN4 Antibody. The lane on the right is blocked with the synthesized peptide.



Western blot analysis of the lysates from HeLa cells using FOXN4 antibody.



Immunohistochemical analysis of paraffin-embedded human Colon cancer. 1, Antibody was diluted at 1:200(4° overnight). 2, Tris-EDTA, pH9.0 was used for antigen retrieval. 3, Secondary antibody was diluted at 1:200(room temperature, 45min).